

Grampian

SOUND EQUIPMENT

QUICK REFERENCE

LIST

AND

**Brief description of some of our
extensive range of models. Full
details on application.**

Illustrations and details of goods are generally descriptive but are not binding as improvements in design are constantly being made.

GRAMPIAN REPRODUCERS LTD.

HANWORTH TRADING ESTATE

FELTHAM · MIDDLESEX

Phone: 01-894 9141/3 Telegrams: REAMP, FELTHAM



**RACK MOUNTED EQUIPMENT FOR
CENTRALISED RELAY INSTALLATIONS**

Various types of rack mountings are made and can be fitted with amplifiers, radio units, gramophone turntables, signal generators, input and output control panels, monitor loud speakers, relays and power packs, etc.

Specifications and quotations will be sent on receipt of detailed requirements.

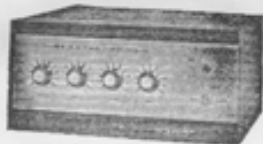




HANDI-PAGE



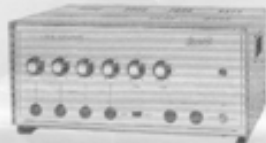
12-24



624



640



662



20/3



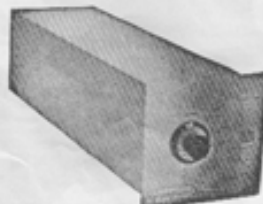
18/4



16/6



636



666



562-7



531/A



650

AMPLIFIERS. A.C. Mains

Type	Watts output	Volts
562-7	15	110/260
602	25/30	110/260
552B	25	110/250
600	50	110/260
650	50	110/260
531A	100	200/260
531B	100	200/260

GENERAL PURPOSE TYPES

Compact amplifier suitable for use in the smaller installation ..
 For larger installations, microphones and auxiliary inputs, separate controls
 High gain amplifier with twin microphone inputs, auxiliary input and universal output
 Heavy duty type two low impedance microphone inputs and one auxiliary input
 As above but with 4 independently controlled high gain microphone inputs, master gain control and one auxiliary input
 High gain, combined pre-amplifier and power amplifier for large installation
 For parallel working with above

PORTABLE OUTFITS

'Vibromajor'	25	110/240	Amplifier, with tremulo, 3 high impedance inputs and 12" speaker
'Tremulo-Super'	10	110/240	Amplifier with twin speakers and tremulo
Handi-page			Complete self-contained outfit
Ensa 12/24	12/24	110/250	Portable outfit, 12-24 Transistor Amplifier, 2 loudspeakers, microphone, stand and leads
Ensa 12/24 A.C./Battery			Outfit as above but for A.C. Mains and 12v. D.C. operation ..
Ensa 12/24 de Luxe	12/24	110/250	Portable outfit, 12-24 Transistor Amplifier, microphone and leads all fitting into the twin unit loudspeaker column. Supplied complete with microphone stand

RECEIVER AMPLIFIERS. A.C. Mains

621	15	110/250	Microphone and Auxiliary inputs. 200/500 and 750/2000 metre bands AM
623	15	110/250	As 621 but with VHF/FM radio unit
601	25/30	110/260	Microphone and Auxiliary inputs. Monitor speaker, 200/500 and 750/2000 metre AM
603	25/30	110/260	As 601 but with VHF/FM radio unit

VHF/FM TUNER UNITS

571			Tuner unit for use with high quality Amplifiers
			Power pack

TRANSISTOR AMPLIFIERS

12/14 VOLTS D.C. TYPES

Type	Watts output
642	5
612	15

Small amplifier suitable for car or mobile use
 3 separately controlled inputs, tone control

110/260 VOLTS A.C. MAINS TYPES

659	5
12-24	12/24
657	12/24

Suitable for small call system, reception rooms, offices, etc. ..
 Amplifier with four input sockets and tone controls, high/low gain switch
 4 independently controlled microphone inputs, high gain, with master control. Specially suitable for Church use

A.C. MAINS & 12/14 VOLTS D.C. TYPES

658	12/24
624A	15
640	30
662	50

Amplifier as type 12/24 but for A.C. mains and 12v. D.C. operation ..
 3 separately controlled inputs
 3 independently controlled inputs, tone controls
 4 independently controlled inputs, bass and treble controls, high and low impedance output

MICROPHONE MIXERS, REVERBERATION UNIT

20/3 Mixer	3 channel, high impedance input and output transistorised mixer, internal battery
"Mike 3/L"	Transistorised three-channel mixer with variable bass and treble tone controls, battery operated
"Mike 3"	2-250 microphone, 1-1 Meg Ω auxiliary input
"Mike 3/H"	2-6000 microphone, 1-1 Meg Ω auxiliary input
18/4 Mixer	2-50K Ω microphone, 1-1 Meg Ω auxiliary input
16/6 Mixer	4 channel mixer pre-amplifier, battery operated. Inputs 6000 outputs 6000 (other arrangements at small extra charge) ..
Reverberation Unit	5 channel, high grade, high gain mixer pre-amplifier mains operated. Inputs and outputs to order as required. from self contained transistorised/battery operated for use with tape recorders, amplifiers, etc.
Power Pack	For operation of Reverberation unit from A.C. mains
Ambiophonic unit	New unit for adding presence or reverberation to pre-recorded tape or disc. Mains operated

RECORD PLAYING DESKS, 4-Speed

A.C. Mains. 200/250 volts. Autochanger. M.50
--	----	----	----	----



GC/1



DP6



WINDSHIELDS



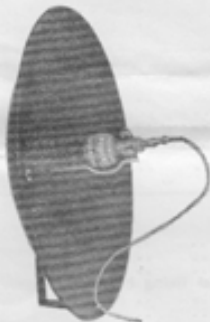
DP4 on Circular Base



DP4



GR1 & 2



PARABOLIC REFLECTOR



G7 & G16



CONTROL MICROPHONES OF ALL TYPES

MOVING COIL MICROPHONES

DP4/L 25Ω	Tubular type, with lead and connector
DP4/X 200Ω	" " " " " " " " " " " "
DP4/M 600Ω	" " " " " " " " " " " "
DP4/H 50KΩ	" " " " " " " " " " " "
DP4/L/SS 25Ω	As above, but with press button
DP4/X/SS 200Ω	" " " " " " " " " " " "
DP4/M/SS 600Ω	" " " " " " " " " " " "
DP4/H/SS 50KΩ	" " " " " " " " " " " "
Accessories for use with DP/4	Swivel holder and adaptor for fitting to stand
	Circular table base for above
	On/Off switch assembly (for fitting between mic. and lead)
	Switch assembly, without swivel attachment
	Spare connector only
	Spare connector with 18' screened lead
	Jack plug fitted to lead	extra
	Cable socket
	Neck cord with quick release clip for DP4 and DP6 microphones
DP8/L 25Ω	Tubular type, similar to DP4 but with built-in "on/off" switch, complete with lead and connector
DP8/X 200Ω	" " " " " " " " " " " "
DP8/M 600Ω	" " " " " " " " " " " "
DP8/H 50KΩ	" " " " " " " " " " " "
DP4/L/DPB 25Ω	Desk microphone with "press to talk" button
DP4/L/DSB 25Ω	Desk microphone with "on/off" switch
	M or H type	extra
	/DPB or DSB base only
	Short tubular type side entry socket.
	Short tubular type rear entry socket.
	For use on DP4, DP5, DP6 and DP8
DP/5 Microphones					
DP/6 Microphones					
Windshield					
CC1/L 25Ω	CARDIOID MICROPHONE, complete with GC/SH Swivel Holder, connector and 18' screened lead
CC1/X 200Ω	" " " " " " " " " " " "
CC1/M 600Ω	" " " " " " " " " " " "
CC1/H 50KΩ	" " " " " " " " " " " "
	(Other accessories as CR types)				

RIBBON TYPE MICROPHONES

GR1/L or GR2/L 25/30Ω	Microphone with protective cover 18' screened lead and connector and GR/SH swivel holder in standard cardboard box
GR1/X or GR2/X 200Ω	" " " " " " " " " " " "
GR1/M or GR2/M 600Ω	" " " " " " " " " " " "
GR1/H or GR2/H 50KΩ	" " " " " " " " " " " "
Accessories and spares for GR/1, GR/2 and DP6 microphones only.	As above and with padded instrument case
	On/Off switch unit, type GR/SU
	Circular desk base, type GR/CB
	Swivel holder, type GR/SH
	GR connector plug only
	GR connector plug with 9' screened lead
	GR connector with 18' screened lead
	GR connector with 36' screened lead
	Jack plug fitted to lead	..	extra
	GR cable socket
	GR extension lead 9' with connector plug and cable socket
	GR extension lead 18' with connector plug and cable socket
	GR extension lead 36' with connector plug and cable socket
	Semi-flexible extension connector, type GR/FXC

(Please note—GR type accessories are not interchangeable with DP/4 types)

MICROPHONE ACCESSORIES

S.1	Folding, floor type stand
S.8	Heavy base, floor type stand
S.4	Extending, table type stand
Boom Arm	Adjustable boom arm for use on microphone stands. Reach—27½"
Parabolic reflector	For use with DP/4, DP/5 and DP/6
Windshield	For use with DP4, DP6 and DP8 microphones

MICROPHONE INPUT TRANSFORMERS

M6	Circular Mumetal Box, Ratio 1/120
C7 Types	Circular Mumetal case with input jack socket and screened output lead. Primary and secondary for unbalanced working
C16 Types	As above but with primary connected to a tip, ring and sleeve jack socket for balanced line working. The secondary winding is connected for unbalanced working
TYPE Nos.	Input	Output	Type	Type	
	15-30 ohms	High Impedance	G7/LH	G16/LH	
	15-30 ohms	600 ohms	G7/LM	G16/LM	
	600 ohms	High Impedance	G7/MH	G16/MH	
	High Impedance	600 ohms	G7/HM	G16/HM	
	15-30 ohms	200 ohms	G7/LX	G16/LX	
	200 ohms	High Impedance	G7/XH	G16/XH	

MICROPHONE & LOUDSPEAKER CABLE & PLUGS

Single flexible conductor, screened and covered overall
Twin flexible conductors, as above
Twin flexible loud speaker cable
3-pin, non-reversible plug PG41
3-pin, non-reversible socket, panel mounting
2-pin plug PG42



6/GFC



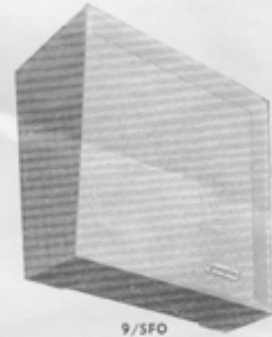
6 x 5



T.C.12



5/SFP



9/SFO

LOUD SPEAKERS

PERMANENT MAGNET, CONE TYPE UNITS

Type	Diameter	Watts peak	Flux Lines per sq./cm.	Speech Coil ohms
G.109/98C	9in.	7	8500	15
G.958/911C	9in.	7	11500	15
1255/15	12in.	10	14500	15
T.C.12	12in.	10	14500	15

High quality, twin cone unit.



CD/9

CONE TYPE UNITS IN CABINETS

5/SFP	Small sloping front cabinet, painted finish,	5" Unit
5/SFO	As above, veneered finish	5" Unit
8/SFP	(Fitted ST53 line transformer for 1, 2, 3, 1 1/2 watts) extra	8" Unit
8/SFO	Large sloping front cabinet, painted finish,	8" Unit
9/SFP	As above, veneered finish	9" Unit
9/SFO	(Fitted ST54 line transformer for 5, 3, 1 1/2 watts) extra	9" Unit



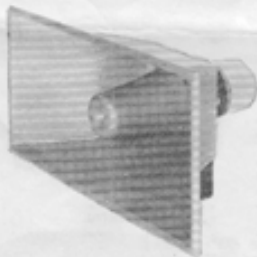
HD/9

LINE SOURCE, COLUMN LOUD SPEAKERS

6 x 4	Oak veneered finish, 5 watts, 15Ω and 100v. line
6 x 5	Oak veneered finish, 10 watts, 15Ω
6 x 5/Tx	Oak veneered finish, 10 watts, 100v. line
4 x 8	Oak veneered finish, 25 watts, 15Ω
4 x 8/Tx	Oak veneered finish, 25 watts, 100v. line
4 x 9	Oak veneered finish, 25 watts, 15 ohms
4 x 9/Tx	Oak veneered finish, 25 watts, 100v. line
6 x 9/Tx	Oak veneered finish, 25 and 50 watts, 15Ω and 100v. line
4/GFC	Outdoor, glass fibre 5, 15, 25 watts, 15Ω and 100v. line
6/GFC	Outdoor, glass fibre 25, 37, 50 watts, 15Ω and 100v. line

CIRCULAR DIFFUSER TYPES, 360° Distribution

HD/9	For suspension from high ceilings 7 watts
	Fitted ST5 line transformer	extra
CD/9	For ceiling or wall mounting 7 watts
	Fitted ST5 line transformer	extra
CD/5	For ceiling or wall mounting, 1 watt
	Fitted ST41 line transformer	extra



SP/10

HIGH VELOCITY, PROJECTOR TYPE

SP/10	Rectangular reflex horn only
	Driver unit, 15 ohms, 10 watts peak
	Speaker complete, horn and unit
SP/10/W	Weatherproof, 8" dia. circular flare, protected unit and special fixing bracket for car roof
SP/10TX	Driver unit with built-in line transformer
	Speaker complete with SP10/TX unit
SH/42	42in. Exponential Horn only
Powerflex	Re-entrant horn. Horn only
S.P.25/1	Unit only 15 ohms, 25 watts peak
S.P.25/Tx	Unit only with built-in line transformer
	SH/42 or Powerflex horn complete with SP25/1 Unit
	SH/42 or Powerflex horn complete with SP25Tx. Unit

SPEAKER LINE MATCHING TRANSFORMERS

For use with Speakers on standard 100 volt line.

Type	Watts	Impedance range
S.T.3	3	1,300 to 10,000 ohms
S.T.5	5	1,250 to 4,000 ohms
S.T.9	8	1,250 to 4,000 ohms
S.T.12	12	600 to 4,150 ohms
S.T.25	12	600 to 3,200 ohms

LOUD SPEAKER VOLUME CONTROL

Constant impedance type, switch controlled



POWERFLEX



SH/42